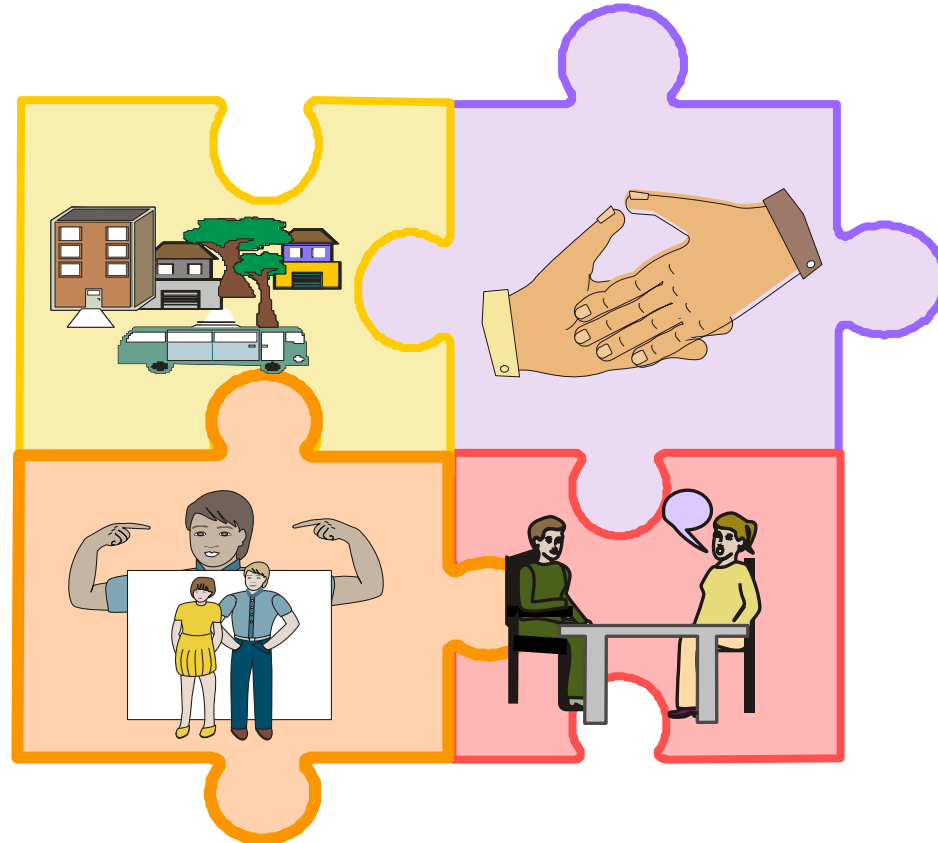


Partners in Community Inclusion

Building the Dream

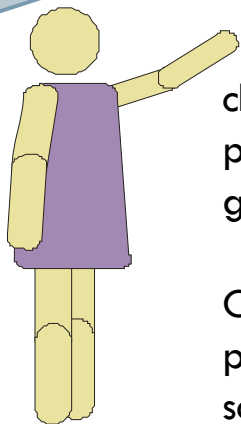
Work Sheets





Building the Dream

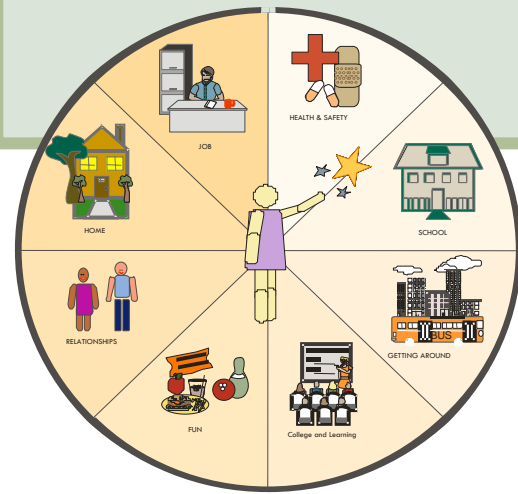
"Inclusion is about learning to live WITH one another. Inclusion means 'being with'."
Marsha Forest and Jack



Building the dream of ONE COMMUNITY happens one step at a time having our children included as equal members of our neighborhoods and communities. The journey is personal and unique to each family. It starts with creating a family vision for our children and then supporting them to create their own self-directed future as adults. We believe teaching our children how to make choices and being independent starts with us, as parents, becoming partners in our own communities; reaching out, contributing, being neighbors, joining school groups and most of all believing in our children and their abilities.

Our dream encourages our children to participate in all aspects of the community. As parents, we need to form partnerships with other families, build positive relationships with schools, collaborate with service providers and get to know our neighbors. Together, we can advocate for personal choice, self-determination, and social and economic justice for all our children. To conclude, we believe our children can live productive lives with meaningful relationships. We, as parents, can make a difference by being active members of our own communities, reaching out to families in need, and disseminating information about inclusive practices and self-determination.

Natural Supports



Natural Supports means personal relationships typically developed in the community that enhances the quality and security of life. It includes family relationships, neighborhood friends, school buddies, clubs like Boys/Girl Scouts, as well as, civic or church activities

Natural Supports are about all the people and relationships in your life (friends, family, and co-workers). It's the network you tap into during important times of your life.

1. Who are the people in your network of support ? _____

People who are our natural support network do not teach us skills or facilitate learning; they just nurture and support. Natural supports are about being with people, not having people do things for us.

The services and supports provided by the Lanterman Act should be opportunities for children to learn necessary skills that lead to living an independent self-directed life. Practicing at home, applying the learning in the community and allowing time for children to discover and explore their own independence are important ways to support and enrich the services provided by schools and the Regional Center.

Finally, working in team building relationships and within our own communities by developing enriching natural relationships offers our children opportunities to become active participating members of their neighborhoods and communities.

Community Inclusion



Community inclusion is about any child or adult being a member of their neighborhood, participating in their community and sharing in the rights and responsibilities of being a member of society.

1. How is your child currently participating? _____

Our children have the right to participate in typical jobs, attend local schools and higher education, choose their own housing and have meaningful relationships.

2. What are the meaningful relationships your child has? _____

3. What makes them meaningful for your **CHILD**? _____

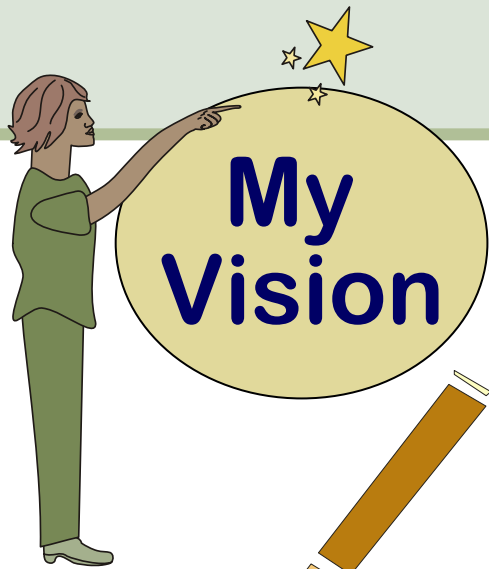
Community Inclusion In the neighborhood means being known and knowing neighbors by their first and last names and where the families live. It also means helping out and participating in activities "typical" children and adolescents would do.

4. Does your child know the names of your neighbors or friends? _____

5. In what ways does your child help (contribute) in the community and at home?

(home) _____ / _____ Community _____ / _____

Creating the Vision



Keep in mind

1. A vision must be appropriate for your child.
2. Think big, and hold onto your excitement!
3. It includes many areas such as social, living and career/job.
4. It is a picture of how you want to see your child in the future.
5. It is the basis for developing action plans and services.

The vision (dream) for my child's future is:

Clarifying the Words

Verify your vision is the same or similar to your child's.



Clarify the key words:

Define the key words you use in your Vision Statement. Think about what they mean to you and your family.

It is important that you are clear when speaking with professionals, people in the community and your family.

Key words from the vision

- _____
- _____
- _____
- _____
- _____

What they mean to me [our family]

Key Words and Activities

What does your child do that reinforces the vision?



Key words in your vision

A Key Word: _____

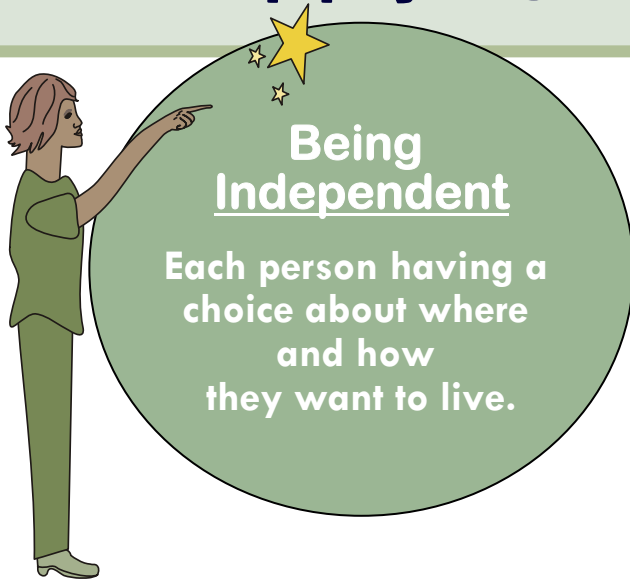
What it means: _____

Activities my child does at home
or in the community

- _____
- _____
- _____
- _____
- _____

One activity I want to try
[see activity cards for examples]

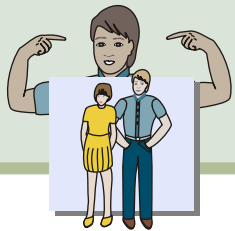
Applying the Vision in our Daily Life



HOW
The vision is applied
[ways you are applying the vision now]



Key Word	School or Class	Home	Community
<input type="checkbox"/>			
<input type="checkbox"/>			
<input type="checkbox"/>			
<input type="checkbox"/>			
<input type="checkbox"/>			



Applying the Vision Today

(1) Inclusion Vision:

(2) What are the key words in the vision statement?

--	--	--	--

(3) One NEW way I want to apply the vision today.

Personal Inventory

I want to learn about

1. _____
2. _____
3. _____
4. _____



Reaching Out

Who can help?

1. _____
2. _____
3. _____
4. _____



Defining the help

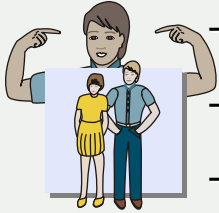
How can they help you?

1. _____
2. _____
3. _____
4. _____



Applying the Vision at School

The Vision Statement [highlighting key words]





School Vision Statement [a picture of how you want school to be for your child]





Core Value

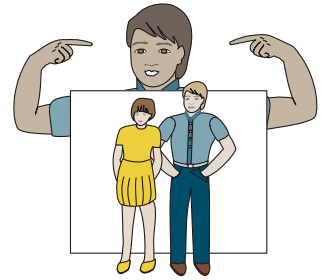
Core Value

Core Value

Core Value



Applying the Vision: School and Community



What school, community and family/home experiences should look like:
[incorporating the vision key words and their meaning]

Key Area:

School:

Family:

Community:

Key Area:

School:

Family:

Community:

Key Area:

School:

Family:

Community: